

CSII02

# Countryside II Villas- CSII02

📍 Frenaros, Famagusta

€300,000 +VAT





# Overview

## Specifications

Bedrooms

 3


Bathrooms

 2

Covered

 141.5 m<sup>2</sup>

Type	<b>Detached Villa</b>
Toilets	<b>1</b>
Plot	<b>220 m<sup>2</sup></b>
Uncovered veranda	<b>30 m<sup>2</sup></b>

Covered parking	<b>19 m<sup>2</sup></b>
Status	<b>Off plan</b>
Year of construction	<b>2026</b>
Energy efficiency rating	 <b>A+</b>

## Description

Countryside II is an exclusive development of 7 modern villas located in the peaceful rural surroundings of Frenaros, just a short distance from the village centre and all everyday amenities. Designed for comfortable family living, this charming project combines privacy, space, and the relaxed lifestyle of a traditional Cypriot village.

Each villa offers 140 m<sup>2</sup> of internal covered areas, with spacious layouts carefully designed to meet modern living needs. The homes feature 3 well-sized bedrooms, 2 bathrooms, and 2 guest toilets, providing practicality and comfort for both residents and visitors.

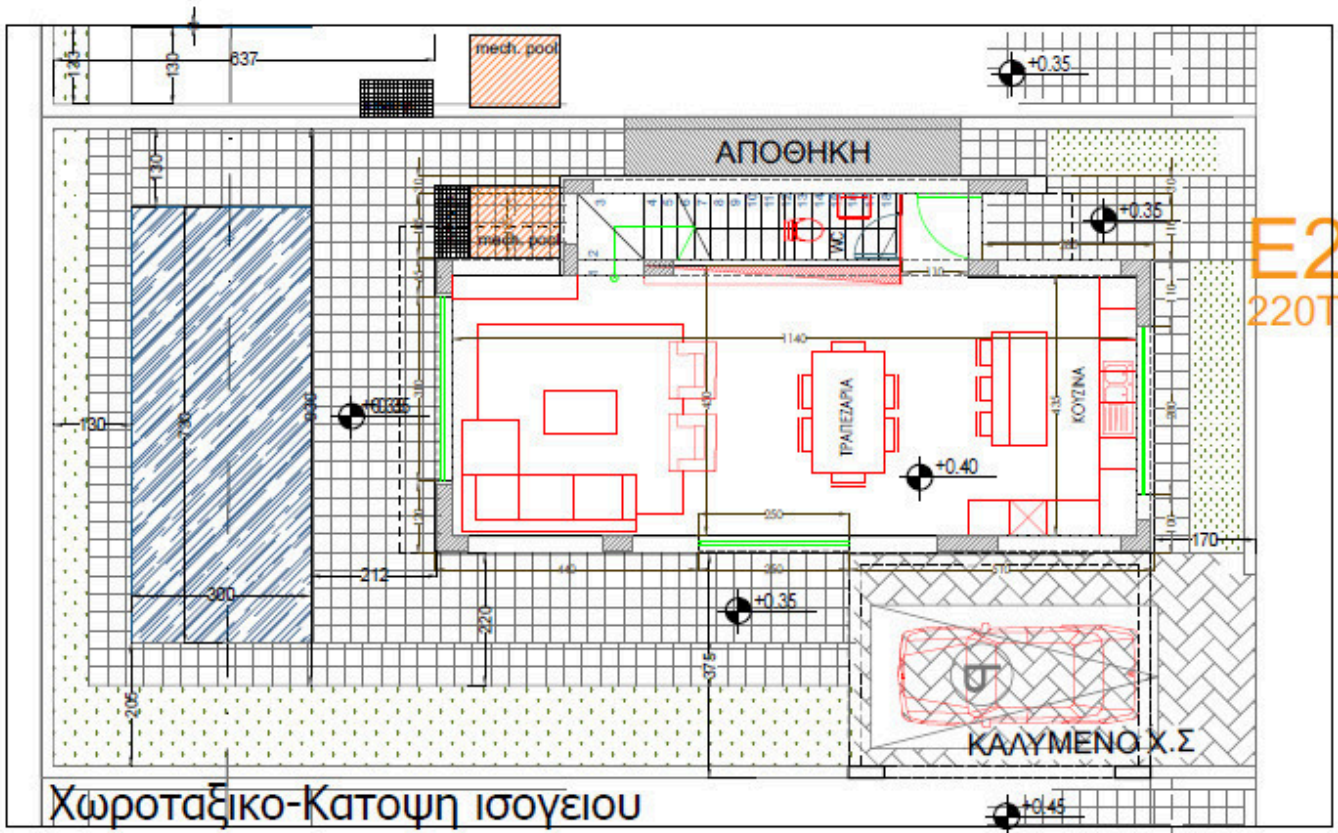
Set on generous plots ranging from 220 m<sup>2</sup> to 257 m<sup>2</sup>, Countryside II offers private outdoor space ideal for gardens, entertaining areas, or enjoying the tranquil surroundings.

Perfect for permanent residence, holiday living, or investment, Countryside II presents a unique opportunity to own a stylish home in a quiet location while remaining close to nearby towns and the beautiful east coast beaches of Cyprus.

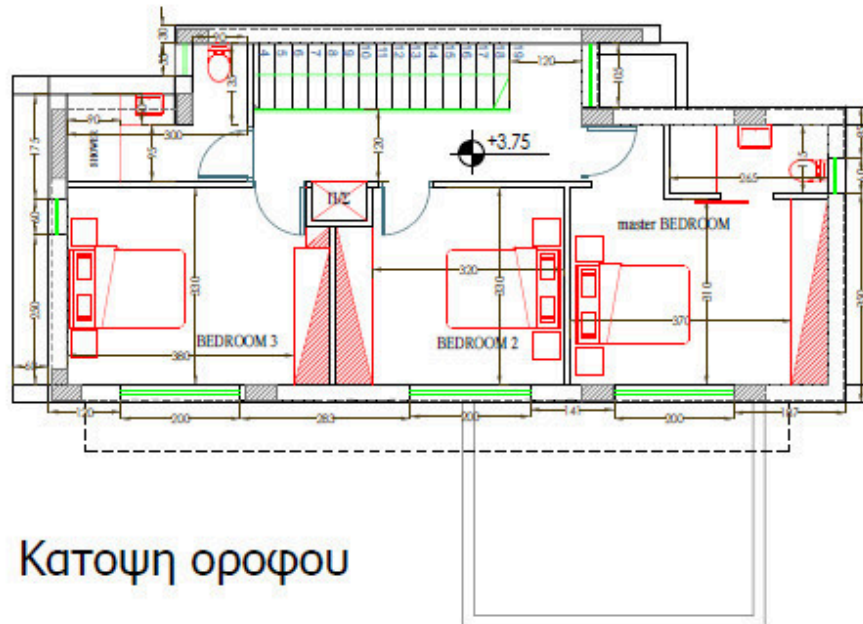


# Floor plans

## ΚΑΤΟΙΚΙΑ 2



E2  
220TM



Κατοψη οροφου

ΣΤΟΙΧΕ

COUNT  
RIGHT

ΤΙΤΛΟΣ

ΣΤΟΙΧΕ

Ονοματεπώνυμ  
Αρ. Μητρώου  
Υπογραφή:



# Additional information

## Facilities

Aircondition, Provision  
Solar water heater

Parking, Uncovered  
Storage

Pool, Optional

## Features

Central TV system  
Distressed property  
Fitted wardrobes  
High ceilings  
Modern design  
Quiet area  
Tile flooring

Connected to electric mains  
Double glazing  
Granite countertops  
Internal stairs  
Open plan  
Sound insulation

Country view  
Energy efficient doors/windows  
Guest WC  
Luxury specifications  
Pipe-in-pipe plumbing system  
Thermal insulation

## Distances

Amenities

 300 m

Airport

 38 km

Sea

 8 km

Public transport

 300 m

Schools

 800 m

