

MY302

Mystale Residences-MY302

📍 Agioi Anargiroi, Larnaca

€315,000 +VAT





Overview

Specifications

Bedrooms

 2

Bathrooms

 2

Covered

 80 m²

Type

Apartment

Covered veranda

32 m²

Uncovered veranda

77 m²

Status

Off plan

Energy efficiency rating

 **A+**

Description

About Mystale Residences...

Mystale Residences is an elegant new residential development by RightHome Developers, strategically positioned in a convenient location just a short distance from the heart of Larnaca, Cyprus — close to the city's vibrant centre and within easy reach of everyday amenities, dining, shopping and transport links.

This boutique, low-rise building comprises 10 thoughtfully designed apartments spread across three levels, offering modern Mediterranean living with quality craftsmanship and contemporary finishes:

6 spacious two-bedroom apartments ideal for families, couples or as investment properties.

4 stylish one-bedroom apartments, perfect for young professionals, singles or as holiday homes.

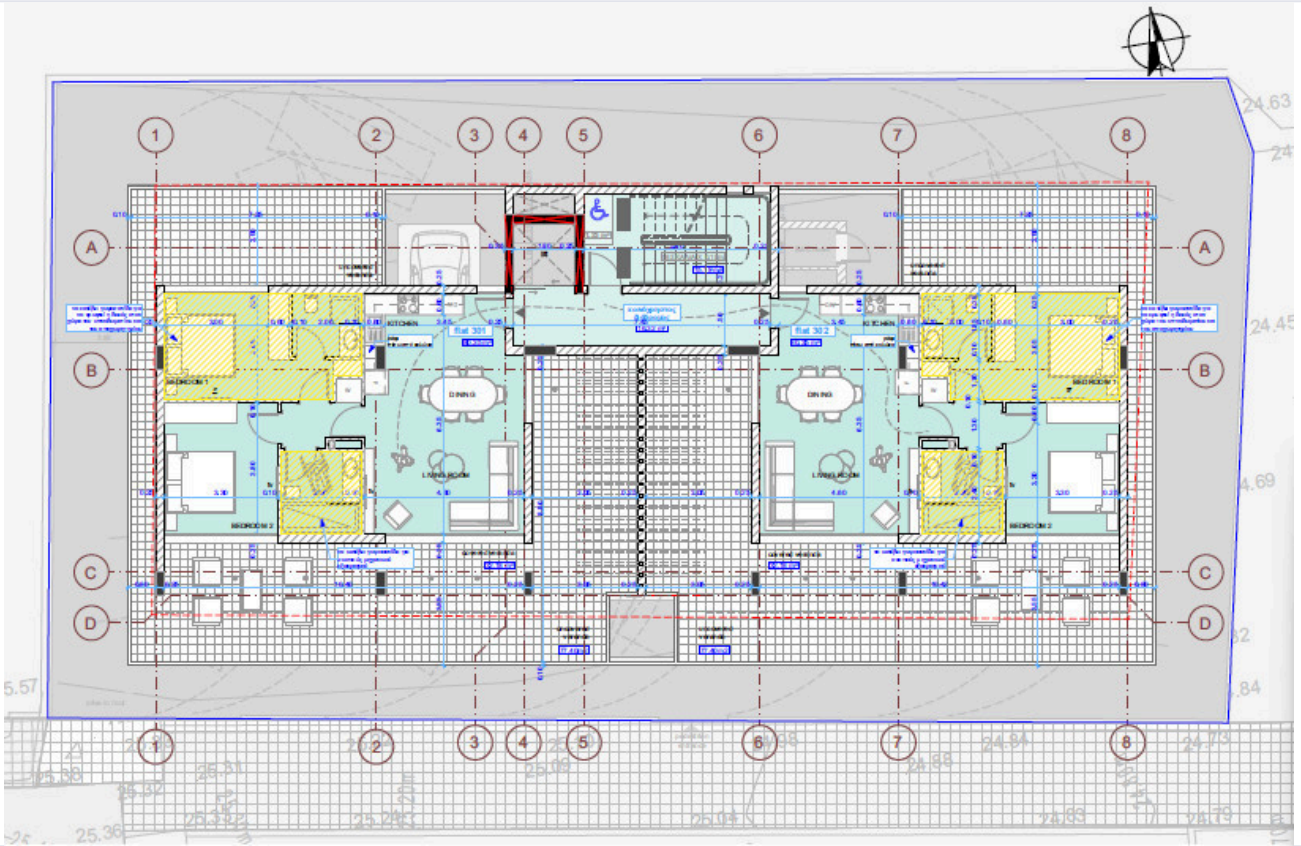
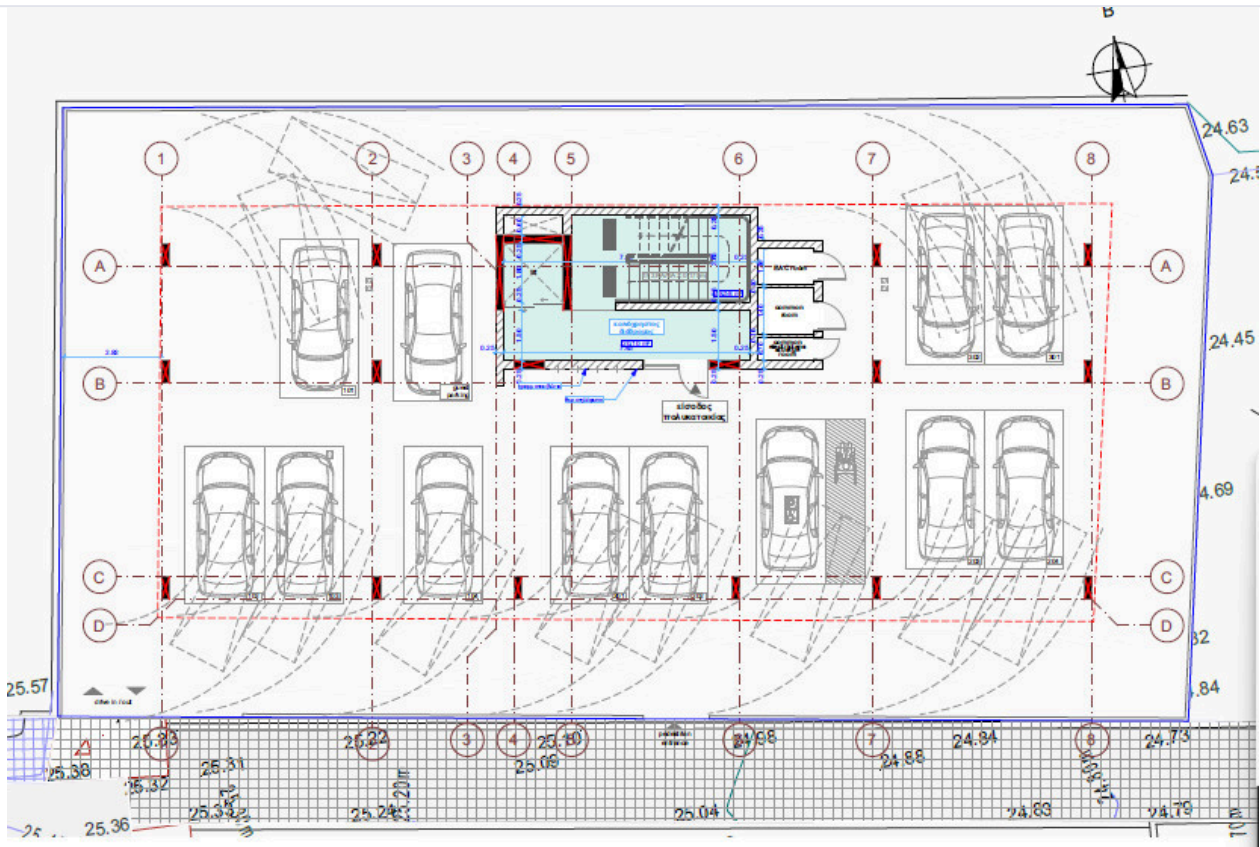
Each residence is designed to maximize natural light, comfort and efficient use of space, creating inviting homes that reflect a relaxed yet refined lifestyle. The building's architecture blends seamlessly with its urban surroundings, offering residents a balance of privacy and connectivity to the thriving city environment of Larnaca.

RightHome Developers, a Cyprus-based property development company with over 20 years of experience and a portfolio comprising thousands of residential units, brings its commitment to quality and thoughtful design to this new residential offering.

Mystale Residences presents an excellent opportunity for those seeking a contemporary home or a smart investment in one of Cyprus's most desirable coastal cities.



Floor plans



This e-mail and any attachments contained herein are privileged and confidential, intended only for the use of the recipient(s). If you are not the intended recipient of this email, you are hereby notified that any dissemination, disclosure, copying or use of information contained in this e-mail is strictly prohibited. If

Additional information

Facilities

Aircondition, Provision

Gated complex

Parking, Covered

Solar photovoltaic panels

Solar water heater

Features

Balcony, front

Central TV system

Combined kitchen and dining area

Double glazing

Easy access to main roads

En suite shower

Energy efficient doors/windows

Fitted wardrobes

Granite countertops

Investment opportunity

Luxury specifications

Modern design

Near amenities

Rental potential

Sound insulation

Distances

Amenities



300 m

Sea



2 km

Public transport



200 m

