

RH204

Righthome Heights -RH204

 Oroklini, Larnaca

€152,000 +VAT





Overview

Specifications

Bedrooms

 1

Bathrooms

 1

Covered

 51 m²

Type

Apartment

Covered veranda

7 m²

Status

Off plan

Year of construction

2025

Energy efficiency rating

 **A+**

Description

About Righthome Heights...

Righthome Heights is an exclusive residential project developed by Righthome Developers, located in the scenic area of Oroklini, Larnaca. This boutique development consists of 8 modern apartments, offering an ideal living experience for individuals and small families. The project includes:

- 4 one-bedroom apartments, perfect for singles or couples seeking a cozy and comfortable living space.
- 4 two-bedroom apartments, designed for families or those who need a little more room to grow.

Each apartment boasts spacious interiors, stylish finishes, and modern conveniences. Residents also benefit from dedicated storage rooms and covered parking, providing added convenience and security.

Situated in a peaceful area of Oroklini, this development offers easy access to local amenities, beaches, and the Larnaca city center, making it an excellent choice for those seeking both tranquility and accessibility. Righthome Heights embodies the perfect balance of contemporary design and practical living in one of Larnaca's most sought-after locations.

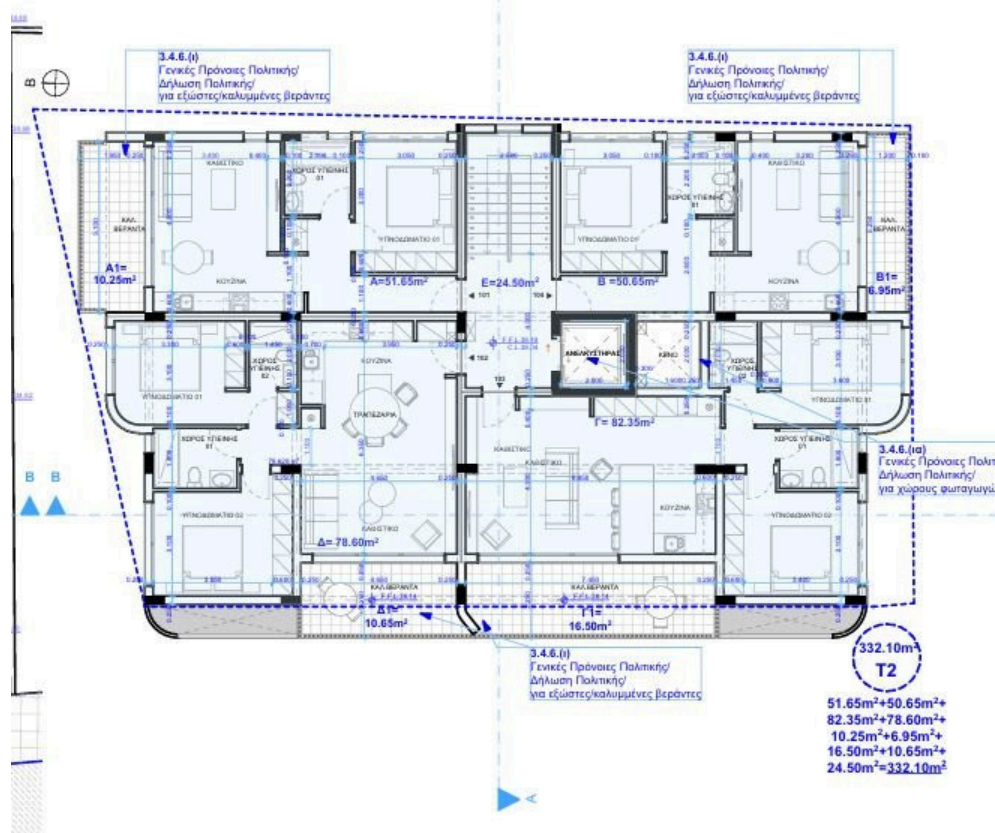
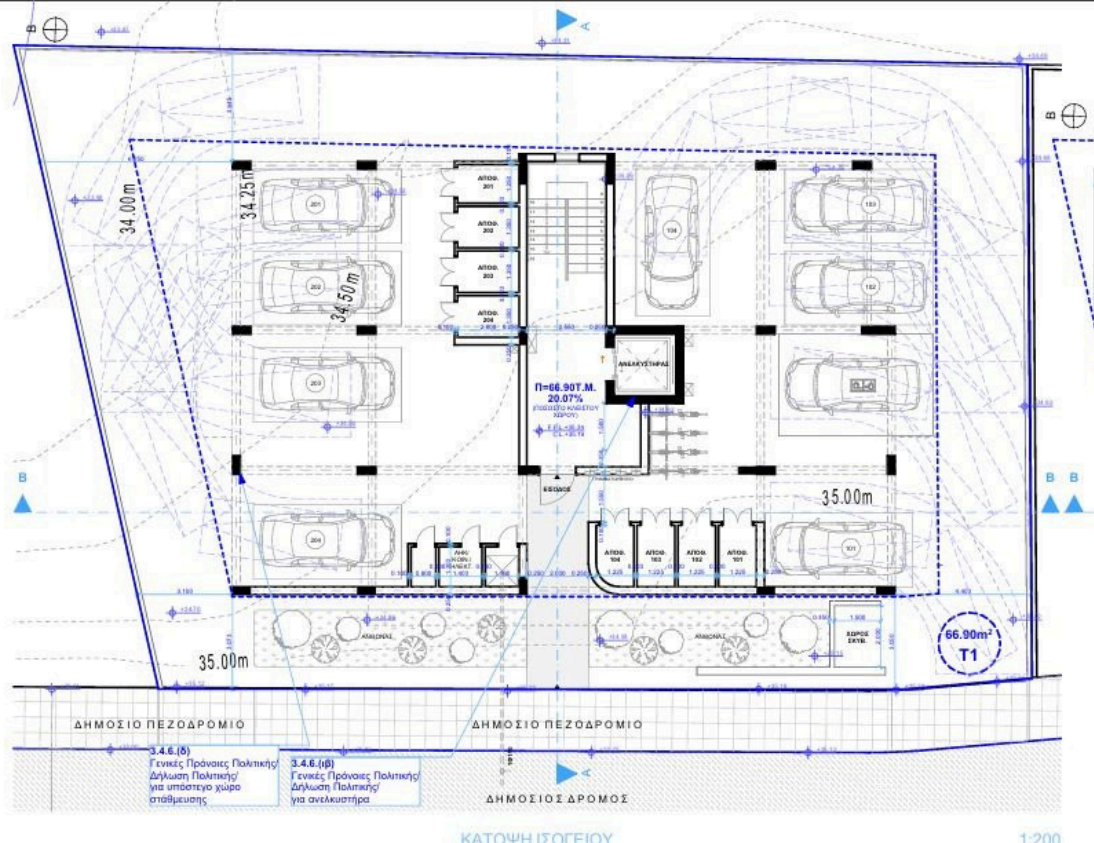
Additional information:

Righthome Heights consist to be ideal for young couples that wish to buy their first home. Because of the following:

- Value for money (high investment return)
- Best Quality on the finishes materials
- Quiet Area
- Close to Amenities
- Close to the coastal area of Orokini
- First time buyers who purchase a property for permanent residence or as a holiday home for their own use are entitled to a lower VAT Rate of 5% subject to the approval of the Cyprus VAT office.



Floor plans



Additional information

Facilities

Aircondition, Provision

Elevator

Parking, Covered

Solar photovoltaic panels
(provision)

Solar water heater

Storage

Features

Balcony, front

Central TV system

Ceramic tiles

Combined kitchen and dining
area

Connected to electric mains

Country view

Double glazing

Easy access to highway

Easy access to main roads

Electric car charger (provision)

Elevated

En suite shower

Energy efficient doors/windows

Entrance gate

Fitted wardrobes

Garbage disposal

Granite countertops

High ceilings

Investment opportunity

Luxury specifications

Modern design

Municipal water/sewage

Near amenities

Near bus route

Open plan

Painted

Quiet area

Rental potential

Thermal insulation

Tile flooring

Distances

Amenities



200 m

Airport



17 km

Sea



2 km

Public transport



200 m

Schools



500 m

